

SORTER STAPLER CONNECTOR UNIT

(A310)

PARTS CATALOG

INTRODUCTION

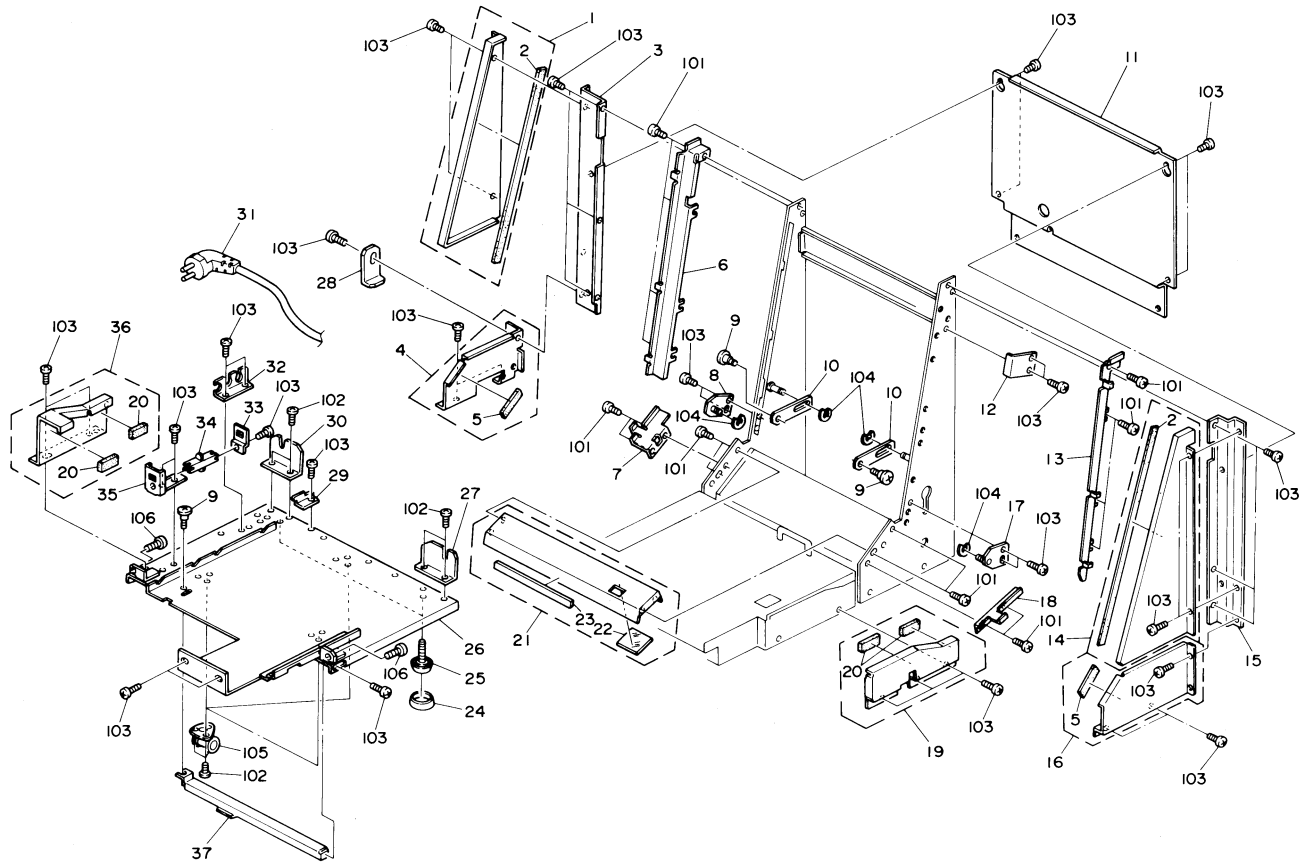
This chapter instructs you the numbers and names of this parts on this machine.

INDEX to PARTS CATALOG

1. Exterior (A310)	2
2. Horizontal Transport Section (A310)	4
3. Vertical Transport Section 1 (A310)	6
4. Vertical Transport Section 2 (A310)	8
5. AC Harness (A310)	10
6. Safety Switch Harness (A310)	12
7. DC Harness (A310)	14
8. DC Harness (A310)	16
9. Decal and Document (A310)	18
Parts Index	22

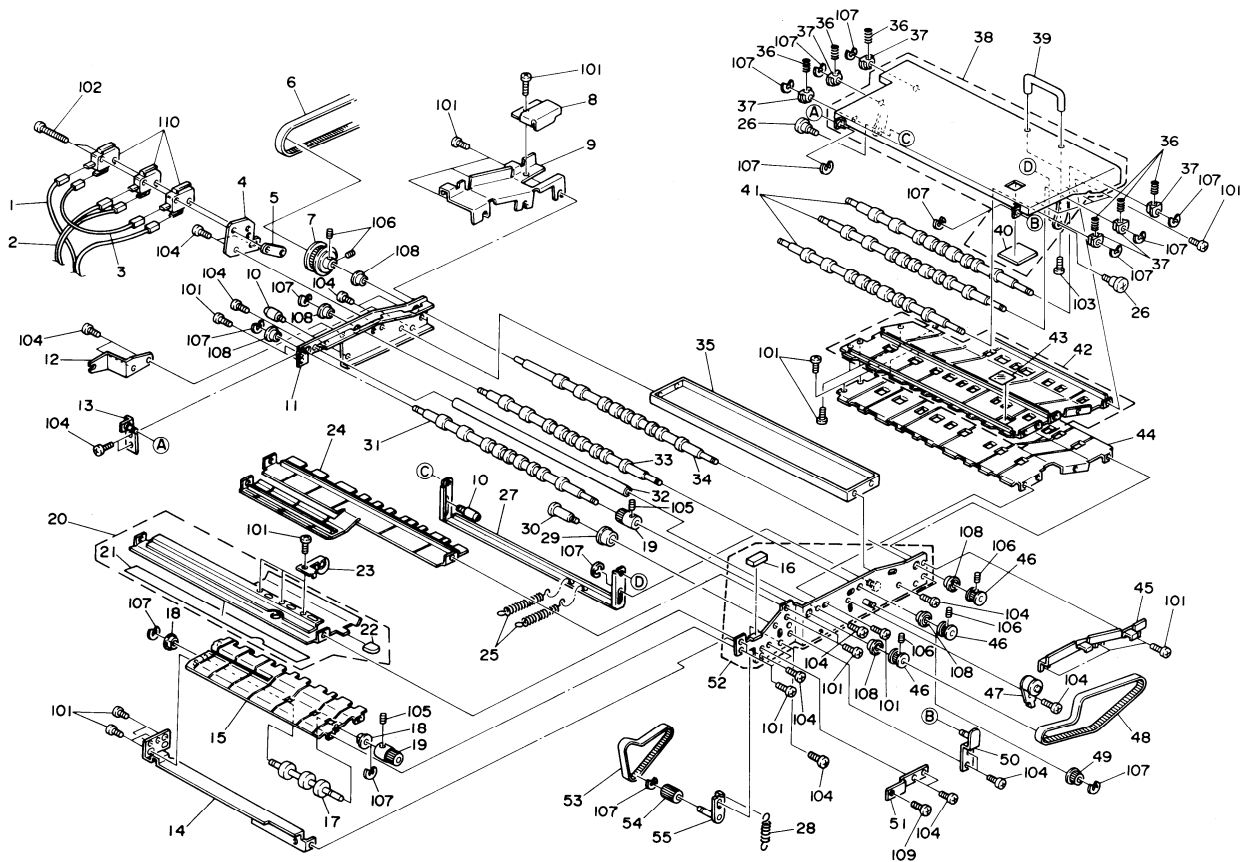
1. EXTERIOR (A310)

April 15, 1990



2. HORIZONTAL TRANSPORT SECTION (A310)

April 15, 1990



2. HORIZONTAL TRANSPORT SECTION (A310)

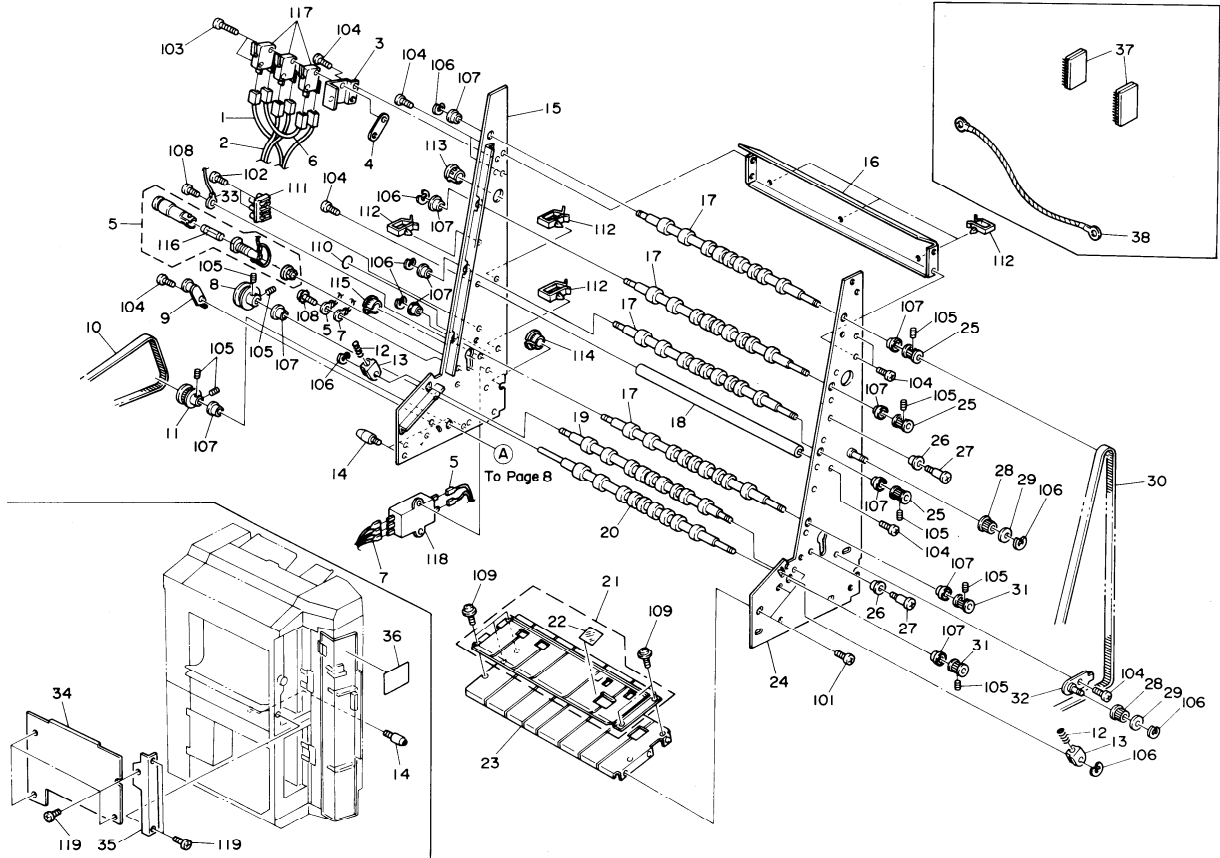
April 15, 1990

Index No.	Part No.	Description	Q'ty Per Assembly
1	A310 5320	Safety Switch Harness	1
2	A310 5330	DC Harness	1
3	A310 5321	Safety Switch Harness - 220/240V	1
4	A310 2681	Microswitch Bracket	1
5	5056 0509	Nut Plate - Microswitch	1
6	AA04 3108	Timing Belt - 140XL	1
7	AB03 0242	Pulley - 30Z	1
8	A310 2475	Pulley Cover	1
9	A310 2472	Rear Side Cover Bracket	1
10	5413 3903	Pin - Transfer Guide Plate	3
11	A310 2220	Rear Horizontal Side Plate	1
12	A310 2713	Rear Fixing Bracket	1
13	A310 2495	Rear Side Support Plate	1
14	A310 2215	Entrance Side Plate	1
15	A310 2441	Lower Guide Plate	1
16	AA02 0003	Slide Lever Magnet	1
17	A310 2438	Small Drive Roller	1
18	5053 0447	Bushing - M6	2
19	AB03 0251	Pulley - 16Z	2
20	A310 2429	Upper Guide Plate	1
21	A310 2434	Mylar Seal - 0.125x26x457	1
22	A411 2531	Knob Cap	1
23	A498 2460	Transport Driven Roller	3
24	A310 2445	Transport Guide Plate	1
25	A310 2655	Side Link Spring	2
26	5403 2075	Stepped Screw	2
27	A310 2611	Side Link	1
28	5893 2014	Spring	1
29	5887 4185	Idler Pulley	1
30	5887 4195	Stopper Screw	1
31	A310 2439	Large Drive Roller	1
32	5887 4120	Stay - Side Plate	1
33	5887 4131	Vertical Drive Roller - B	1
34	5887 4130	Vertical Drive Roller - A	1
35	A310 2236	Transport Stay	1

Index No.	Part No.	Description	Q'ty Per Assembly
36	5887 4156	Spring - Driven Roller	6
37	5887 4155	Shaft Guide - Turn Driven	6
38	A310 2479	Horizontal Cover	1
39	5880 1108	Grip	1
40	5946 3621	Partition Plate - 62x62mm	1
41	5887 4132	Vertical Driven Roller	3
42	A310 2455	Upper Horizontal Guide Plate	1
43	5946 2453	Mylar Sear - 0.125x54x55mm	1
44	A310 2461	Lower Horizontal Guide Plate	1
45	A310 2471	Front Side Cover Bracket	1
46	5887 4190	Pulley - 10Z	3
47	5946 2511	Transport Roller Tightener	1
48	AA04 3106	Timing Belt - 99XL	1
49	5887 4183	Idler Pulley	1
50	A310 2491	Front Side Support Plate	1
51	A310 2712	Front Fixing Bracket	1
52	A310 2209	Front Horizontal Side Plate	1
53	AA04 3107	Timing Belt - 129XL	1
54	5918 2323	Pulley - 18Z	1
55	A310 2230	Tension Pulley Bracket	1
101	0313 0060W	Philips Pan Head Screw - M3x6	
102	0313 0250W	Philips Pan Head Screw - M3x25	
102	0313 0350W	Philips Pan Head Screw - M3x35	
103	0315 0080W	Philips Pan Head Screw - M5x8	
104	0434 0080W	Tapping Screw - M4x8	
105	0573 0040E	Hexagon Headless Set Screw - M3x4	
106	0574 0050E	Hexagon Headless Set Screw - M4x5	
107	0720 0040E	Retaining Ring - M4	
108	0741 3906	Busing-6mm	
109	0314 0080W	Philips Pan Head Screw - M4x8	
110	1204 1151	Microswitch	

3. VERTICAL TRANSPORT SECTION 1 (A310)

April 15, 1990



3. VERTICAL TRANSPORT SECTION 1 (A310)

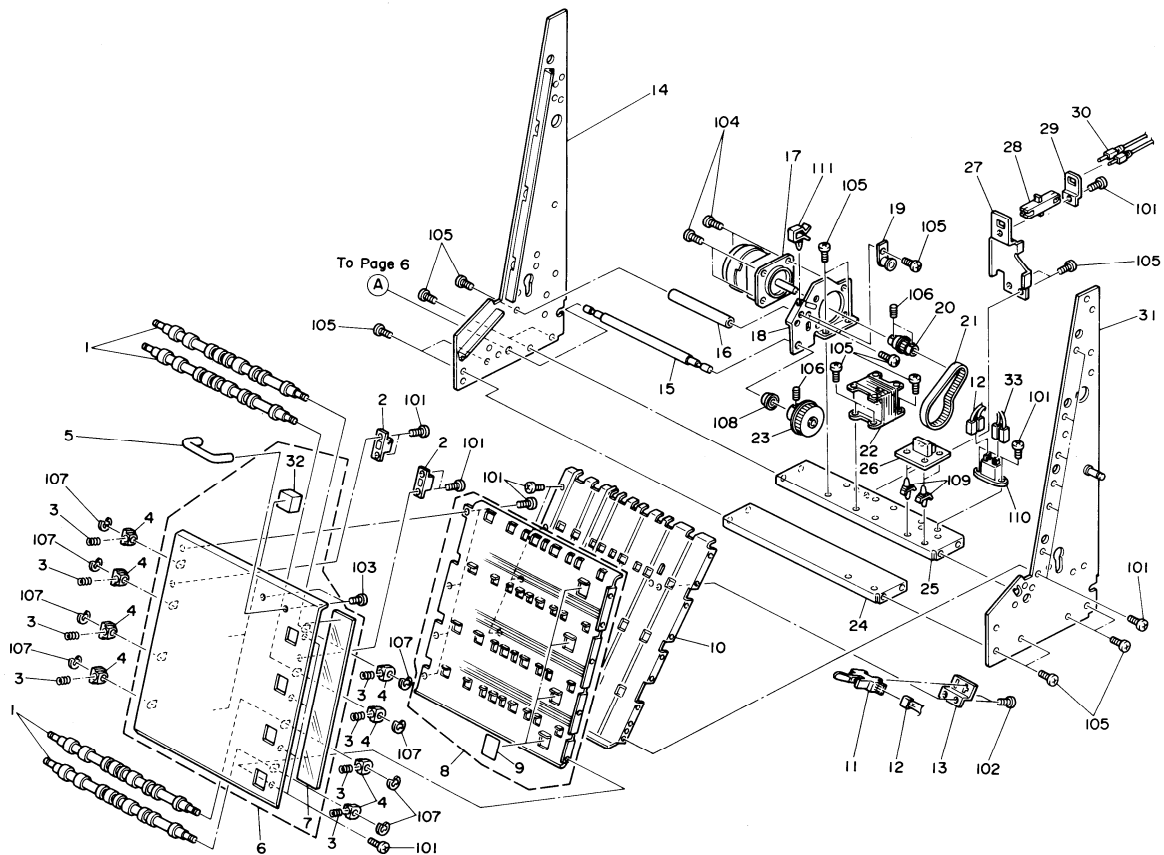
April 15, 1990

Index No.	Part No.	Description	Q'ty Per Assembly
1	A310 5320	Safety Switch Harness	1
2	A310 5330	DC Harness	1
3	5946 2631	Safety Switch Bracket	1
4	5056 0509	Nut Plate - Microswitch	1
5	A310 5300	Fuse Harness - 115V	1
5	A310 5301	Fuse Harness - 220/240V	1
6	A310 5321	Safety Switch Harness - 220/240V	1
7	A310 5311	AC Harness - 115V	1
7	A310 5312	AC Harness - 220/240V	1
8	AB03 0244	Pulley - 32Z	1
9	5946 3791	Belt Tightener	1
10	AA04 3108	Timing Belt - 140XL	1
11	AB03 0240	Pulley - 24Z	1
12	5887 4156	Spring - Driven Roller	2
13	5887 4155	Shaft Guide - Turn Driven	2
14	5413 3903	Pin - Transfer Guide Plate	2
15	A310 3320	Rear Vertical Side Plate	1
16	A310 3177	Vertical Unit Stay	1
17	5887 4131	Vertical Drive Roller - B	4
18	5887 4120	Stay - Side Plate	1
19	5887 4133	Exit Roller	1
20	5887 4130	Vertical Drive Roller - A	1
21	A310 3415	Guide Plate - Driven Roller	1
22	5946 2453	Mylar Sear - 0.125x54x55mm	1
23	5946 3421	Guide Plate - Drive Roller	1
24	A310 3310	Front Vertical Side Plate	1
25	AB03 0246	Pulley - 18Z	3
26	5887 4185	Idler Pulley	2
27	5887 4195	Stopper Screw	2
28	AB03 0250	Idle Pulley - 17Z	2
29	5946 3355	Washer - Tightener	2
30	AA04 3109	Timing Belt - 397XL	1
31	AB03 0248	Pulley - 17Z	2
32	5946 3351	Tightener Bracket	1
33	5946 5230	Power Supply Cord - 115V	1

Index No.	Part No.	Description	Q'ty Per Assembly
33	5946 5231	Power Supply Cord - 220/240V	1
34	A310 4481	Shielding Cover - 2nd Sorter	1
35	A310 4490	Shielding Cover Bracket	1
36	A310 6211	Misfeed Removal Decal - English	1
36	A310 6220	Misfeed Removal Decal - Multi	1
37	A310 5106	IC - Sorter Stapler EPROM	2
38	5937 5780	Grounding Wire	1
101	0313 0060W	Philips Pan Head Screw - M3x6	1
102	0313 0160W	Philips Pan Head Screw - M3x16	1
103	0313 0250W	Philips Pan Head Screw - M3x25	1
103	0313 0350W	Philips Pan Head Screw - M3x35	1
104	0434 0080W	Tapping Screw - M4x8	1
105	0574 0050E	Hexagon Headless Set Screw - M4x5	1
106	0720 0040E	Retaining Ring - M4	1
107	0906	Busing-6mm	1
108	0911 1185	Philips Truss Head Screw - M4x8	1
109	0951 3006W	Philips Screw W/H Flat Washer - M3x6	1
110	1005 0335	Earth Mark	1
111	1101 0359	Terminal - 3P	1
112	1105 0087	Clamp	1
113	1106 0212	Bushing - M15	1
114	1106 0241	Bushing - 6.7mm	1
115	1106 0310	Bushing	1
116	1107 0390	Fuse - 4A	1
117	1204 1151	Microswitch	1
118	1602 0950	Noise Filter	1
119	0344 0060F	Philips Truss Head Screw - M4x6	1

4. VERTICAL TRANSPORT SECTION 2 (A310)

April 15, 1990



4. VERTICAL TRANSPORT SECTION 2 (A310)

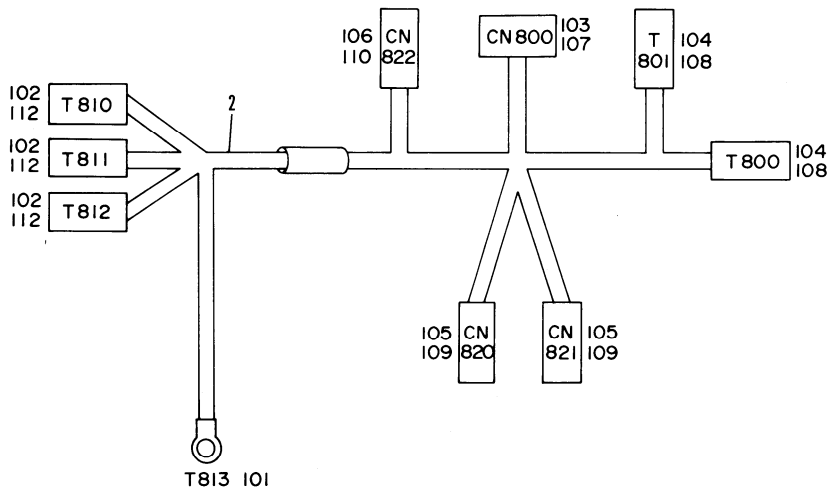
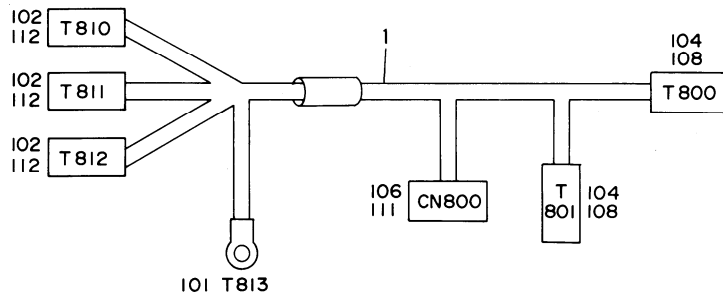
April 15, 1990

Index No.	Part No.	Description	Q'ty Per Assembly
1	5887 4132	Vertical Driven Roller	4
2	5054 0536	Magnet Catch Ass'y	2
3	5887 4156	Spring - Driven Roller	8
4	5887 4155	Shaft Guide - Turn Driven	8
5	5880 1108	Grip	1
6	A310 3556	Vertical Cover	1
7	5946 3541	Partition Plate - 62x425mm	1
8	A310 3555	Left Vertical Guide Plate	1
9	5946 2453	Mylar Sear - 0.125x54x55mm	4
10	A310 3431	Right Vertical Guide Plate	1
11	AW02 0013	Inlet Sensor	1
12	A310 5330	DC Harness	1
13	A310 3434	Sensor Bracket	1
14	A310 3320	Rear Vertical Side Plate	1
15	5946 3761	Drive Shaft	1
16	5946 3771	Sopport Stay - Side Plate	1
17	AX02 0046	Main Motor - AC 41W	1
18	A310 3721	Drive Motor Bracket	1
19	5946 3731	Motor Tightener	1
20	5887 2120	Coupled Pulley - 15Z/18Z	1
21	AA04 3105	Timing Belt - 80XL	1
22	5946 5300	Transformer	1
23	5887 2136	Pulley - 40Z	1
24	5946 3177	Transport Stay Bracket	1
25	A310 3331	Drive Motor Stay	1
26	A007 5416	SSR Board - AC Drive	1
27	5937 4911	Cable Connector Bracket	1
28	A400 5701	Fiber Connector - 2P	1
29	5937 4912	Cable Connector Clamp	1
30	A310 5340	Optical Fiber Cable	1
31	A310 3310	Front Vertical Side Plate	1
32	5946 2691	Pad - 30x40x40mm	2
33	A310 5311	AC Harness - 115V	1
33	A310 5312	AC Harness - 220/240V	1

Index No.	Part No.	Description	Q'ty Per Assembly
101	0313 0060W	Philips Pan Head Screw - M3x6	
102	0314 0060W	Philips Pan Head Screw - M4x6	
103	0315 0080W	Philips Pan Head Screw - M5x8	
104	0315 0400W	Philips Pan Head Screw - M5x40	
105	0434 0080W	Tapping Screw - M4x8	
106	0574 0050E	Hexagon Headless Set Screw - M4x5	
107	0720 0040E	Retaining Ring - M4	
108	0741 3906	Busing-6mm	
109	1105 0159	PCB Stud	
110	1208 1230	Relay - G2R-11123T-V-US	
111	1105 0087	Clamp	

5. AC HARNESS (A310)

April 15, 1990



5. AC HARNESS (A310)

April 15, 1990

Index No.	Part No.	Description	Q'ty Per Assembly
1	A310 5311	AC Harness - 115V	1
2	A310 5312	AC Harness - 220/240V	1

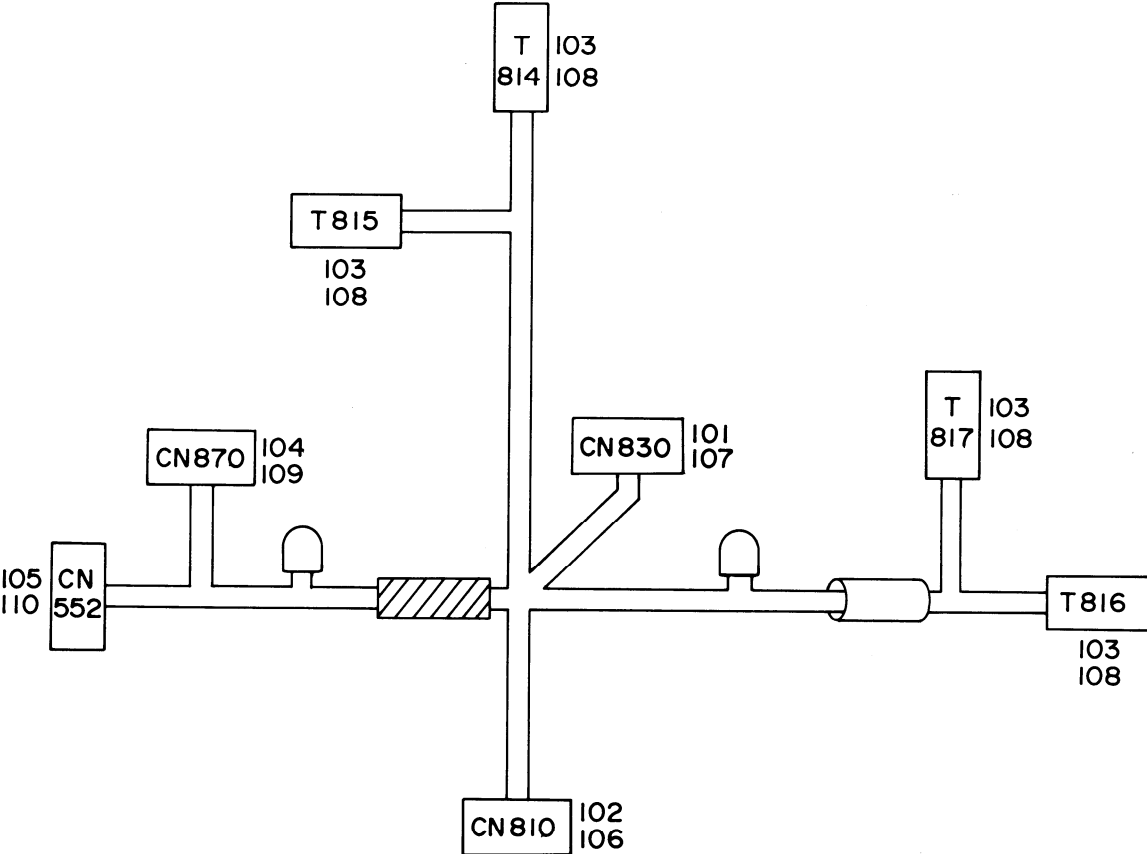


Index No.	Part No.	Description	Q'ty Per Assembly
101	1100 0082	Solid Strand	
102	1100 0885	Fastening Receptacle	
103	1100 0916	Pin - Mate-N-Lok	
104	1100 1169	Fastening Receptacle	
105	1100 1239	Pin - Mate-N-Lock	
106	1100 1241	Socket - Mate-N-Lock	
107	1102 0782	Connector - 4P	
108	1102 1408	Connector - 1P	
109	1102 1506	Connector - 1P	
110	1102 1514	Connector - 1P	
111	1102 1517	Connector - 4P	
112	1102 1745	Receptacle Sleeve	



6. SAFETY SWITCH HARNESS (A310)

April 15, 1990

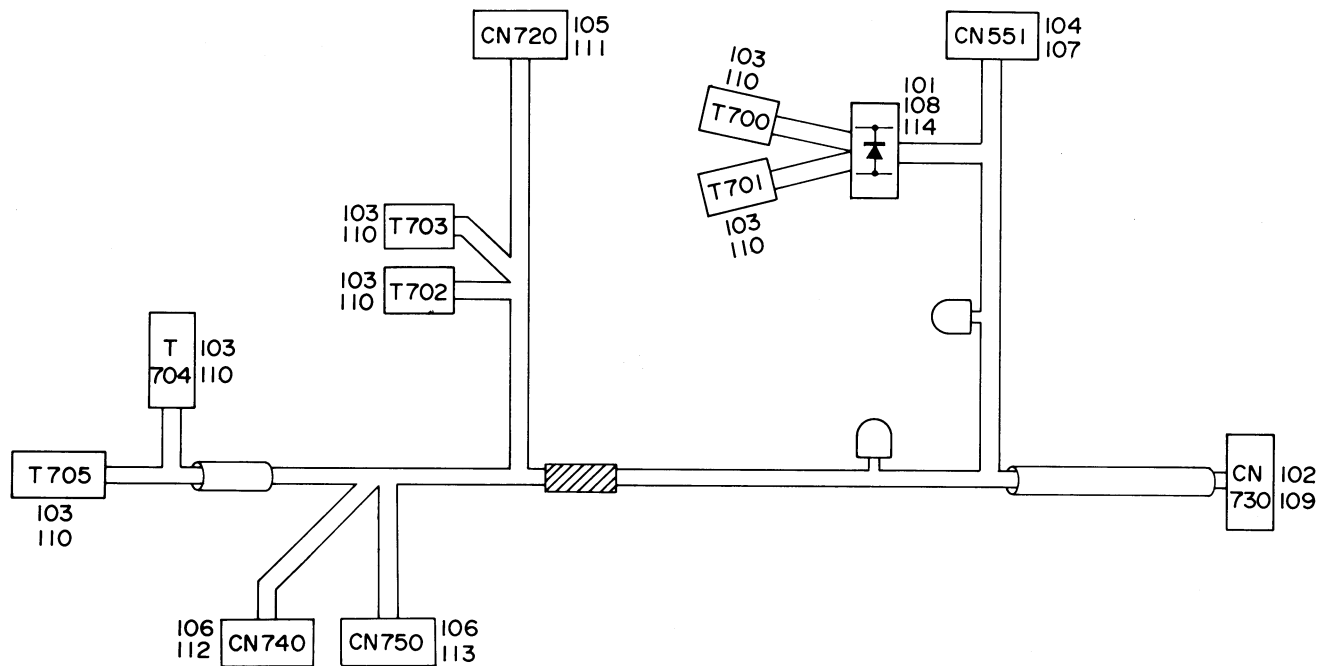


6. SAFETY SWITCH HARNESS (A310)

April 15, 1990

Index No.	Part No.	Description	Q'ty Per Assembly
*	A310 5320	Safety Switch Harness	1

Index No.	Part No.	Description	Q'ty Per Assembly
101	1100 1041	Pin - Mate-N-Lock	
102	1100 1042	Socket - Mate-N-Lock	
103	1100 1169	Fastening Receptacle	
104	1100 1241	Socket - Mate-N-Lock	
105	1100 1247	Terminal	
106	1102 0983	Connector - 2P	
107	1102 0984	Connector - 2P	
108	1102 1408	Connector - 1P	
109	1102 1515	Connector - 2P	
110	1102 1815	Connector - 3P	

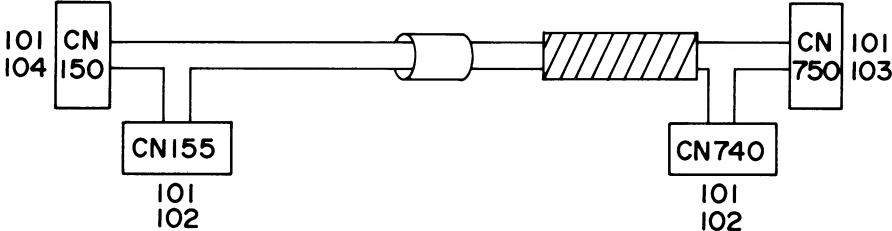


7. DC HARNESS

April 15, 1990

Index No.	Part No.	Description	Q'ty Per Assembly
*	A310 5330	DC Harness	1

Index No.	Part No.	Description	Q'ty Per Assembly
101	1100 1155	Contact	
102	1100 1159	Socket-Mate-N-Lock	
103	1100 1169	Fastening Receptacle	
104	1100 1259	Socket - Mate-N-Lock	
105	1100 1327	Contact	
106	1100 1330	Socket Contact	
107	1102 1089	Connector - 3P	
108	1102 1286	Connector - 2P	
109	1102 1396	Connector - 2P	
110	1102 1407	Receptacle Housing - 1P	
111	1102 1911	Connector - 3P	
112	1102 2045	Pin Housing - 2P	
113	1102 2048	Pin Housing - 6P	
114	1402 0423	Diode - S5500G	



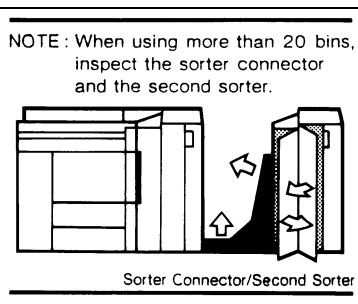
8. DC HARNESS (A310)

April 15, 1990

Index No.	Part No.	Description	Q'ty Per Assembly
*	A310 5332	DC Harness	1

Index No.	Part No.	Description	Q'ty Per Assembly
101	1100 1329	Socket Contact	
102	1102 1982	Socket Housing - 2P	
103	1102 1986	Socket Housing - 6P	
104	1102 1988	Socket Housing - 8P	

1



9. DECAL AND DOCUMENT (A310)

April 15, 1990

Index No.	Part No.	Description	Q'ty Per Assembly
1	A310 6211	Misfeed Removal Decal - English	1
1	A310 6220	Misfeed Removal Decal - Multi	1

Index No.	Part No.	Description	Q'ty Per Assembly
-----------	----------	-------------	-------------------

PARTS INDEX

Part No.	Description	Page and Index No.
A310 1101	Base Plate	3 - 2 6
A310 1141	Front Positioning Angle	3 - 2 7
A310 1146	Rear Positioning Angle	3 - 3 0
A310 2209	Front Horizontal Side Plate	5 - 5 2
A310 2215	Entrance Side Plate	5 - 1 4
A310 2220	Rear Horizontal Side Plate	5 - 1 1
A310 2230	Tension Pulley Bracket	5 - 5 5
A310 2236	Transport Stay	5 - 3 5
A310 2429	Upper Guide Plate	5 - 2 0
A310 2434	Mylar Seal - 0.125x26x457	5 - 2 1
A310 2438	Small Drive Roller	5 - 1 7
A310 2439	Large Drive Roller	5 - 3 1
A310 2441	Lower Guide Plate	5 - 1 5
A310 2445	Transport Guide Plate	5 - 2 4
A310 2455	Upper Horizontal Guide Plate	5 - 4 2
A310 2461	Lower Horizontal Guide Plate	5 - 4 4
A310 2471	Front Side Cover Bracket	5 - 4 5
A310 2472	Rear Side Cover Bracket	5 - 9
A310 2475	Pulley Cover	5 - 8
A310 2479	Horizontal Cover	5 - 3 8
A310 2491	Front Side Support Plate	5 - 5 0
A310 2495	Rear Side Support Plate	5 - 1 3
A310 2611	Side Link	5 - 2 7
A310 2655	Side Link Spring	5 - 2 5
A310 2681	Microswitch Bracket	5 - 4
A310 2690	Connector Bracket	3 - 3 5
A310 2712	Front Fixing Bracket	5 - 5 1
A310 2713	Rear Fixing Bracket	5 - 1 2
A310 3177	Vertical Unit Stay	7 - 1 6
A310 3310	Front Vertical Side Plate	7 - 2 4
A310 3310	Front Vertical Side Plate	9 - 3 1
A310 3320	Rear Vertical Side Plate	7 - 1 5
A310 3320	Rear Vertical Side Plate	9 - 1 4
A310 3331	Drive Motor Stay	9 - 2 5
A310 3415	Guide Plate - Driven Roller	7 - 2 1

Part No.	Description	Page and Index No.
A310 3431	Right Vertical Guide Plate	9 - 1 0
A310 3434	Sensor Bracket	9 - 1 3
A310 3555	Left Vertical Guide Plate	9 - 8
A310 3556	Vertical Cover	9 - 6
A310 3615	Fixing Cover	3 - 2 1
A310 3651	Front Vertical Cover Angle	3 - 1 5
A310 3655	Rear Vertical Cover Angle	3 - 3
A310 3721	Drive Motor Bracket	9 - 1 8
A310 4409	Front Horizontal Cover	3 - 1 9
A310 4419	Rear Horizontal Cover	3 - 3 6
A310 4425	Urethane Pad - 5x20x30	3 - 2 0
A310 4432	Front Lower Vertical Cover	3 - 1 6
A310 4440	Front Upper Vertical Cover	3 - 1 4
A310 4449	Rear Lower Vertical Cover	3 - 4
A310 4460	Rear Upper Vertical Cover	3 - 1
A310 4481	Shielding Cover - 2nd Sorter	7 - 3 4
A310 4490	Shielding Cover Bracket	7 - 3 5
A310 4495	Side Vertical Cover	3 - 1 1
A310 4511	2nd Sorter Stapler Stopper	3 - 2 8
A310 5106	IC - Sorter Stapler EPROM	7 - 3 7
A310 5300	Fuse Harness - 115V	7 - 5
A310 5301	Fuse Harness - 220/240V	7 - 5
A310 5311	AC Harness - 115V	7 - 7
A310 5311	AC Harness - 115V	9 - 3 3
A310 5311	AC Harness - 115V	1 1 - 1
A310 5312	AC Harness - 220/240V	7 - 7
A310 5312	AC Harness - 220/240V	9 - 3 3
A310 5312	AC Harness - 220/240V	1 1 - 2
A310 5320	Safety Switch Harness	5 - 1
A310 5320	Safety Switch Harness	7 - 1
A310 5320	Safety Switch Harness	1 3 - *
A310 5321	Safety Switch Harness - 220/240V	5 - 3
A310 5321	Safety Switch Harness - 220/240V	7 - 6
A310 5330	DC Harness	5 - 2
A310 5330	DC Harness	7 - 2

Part No.	Description	Page and Index No.
A310 5330	DC Harness	9 - 12
A310 5330	DC Harness	15 - *
A310 5332	DC Harness	17 - *
A310 5340	Optical Fiber Cable	9 - 30
A310 6211	Misfeed Removal Decal - English	7 - 36
A310 6211	Misfeed Removal Decal - English	19 - 1
A310 6220	Misfeed Removal Decal - Multi	7 - 36
A310 6220	Misfeed Removal Decal - Multi	19 - 1

Part No.	Description	Page and Index No.
AA02 0003	Slide Lever Magnet	5 - 16
AA04 3105	Timing Belt - 80XL	9 - 21
AA04 3106	Timing Belt - 99XL	5 - 48
AA04 3107	Timing Belt - 129XL	5 - 53
AA04 3108	Timing Belt - 140XL	5 - 6
AA04 3108	Timing Belt - 140XL	7 - 10
AA04 3109	Timing Belt - 397XL	7 - 30
AB03 0240	Pulley - 24Z	7 - 11
AB03 0242	Pulley - 30Z	5 - 7
AB03 0244	Pulley - 32Z	7 - 8
AB03 0246	Pulley - 18Z	7 - 25
AB03 0248	Pulley - 17Z	7 - 31
AB03 0250	Idle Pulley - 17Z	7 - 28
AB03 0251	Pulley - 16Z	5 - 19
AW02 0013	Inlet Sensor	9 - 11
AX02 0046	Main Motor - AC 41W	9 - 17
A007 5416	SSR Board - AC Drive	9 - 26
A400 5701	Fiber Connector - 2P	3 - 34
A400 5701	Fiber Connector - 2P	9 - 28
A411 2531	Knob Cap	5 - 22
A498 2460	Transport Driven Roller	5 - 23
5053 0447	Bushing - M6	5 - 18
5054 0536	Magnet Catch Ass'y	9 - 2
5056 0509	Nut Plate - Microswitch	5 - 5
5056 0509	Nut Plate - Microswitch	7 - 4
5403 2075	Stepped Screw	3 - 9
5403 2075	Stepped Screw	5 - 26
5413 3903	Pin - Transfer Guide Plate	5 - 10
5413 3903	Pin - Transfer Guide Plate	7 - 14
5424 1064	Screw Stand	3 - 25
5446 1086	Leveling Foot Guide	3 - 24
5880 1108	Grip	5 - 39
5880 1108	Grip	9 - 5
5887 1202	Magnet - Upper Cover	3 - 23
5887 2120	Coupled Pulley - 15Z/18Z	9 - 20

Part No.	Description	Page and Index No.
5887 2136	Pulley - 40Z	9 - 2 3
5887 4120	Stay - Side Plate	5 - 3 2
5887 4120	Stay - Side Plate	7 - 1 8
5887 4130	Vertical Drive Roller - A	5 - 3 4
5887 4130	Vertical Drive Roller - A	7 - 2 0
5887 4131	Vertical Drive Roller - B	5 - 3 3
5887 4131	Vertical Drive Roller - B	7 - 1 7
5887 4132	Vertical Driven Roller	5 - 4 1
5887 4132	Vertical Driven Roller	9 - 1
5887 4133	Exit Roller	7 - 1 9
5887 4155	Shaft Guide - Turn Driven	5 - 3 7
5887 4155	Shaft Guide - Turn Driven	7 - 1 3
5887 4155	Shaft Guide - Turn Driven	9 - 4
5887 4156	Spring - Driven Roller	5 - 3 6
5887 4156	Spring - Driven Roller	7 - 1 2
5887 4156	Spring - Driven Roller	9 - 3
5887 4183	Idler Pulley	5 - 4 9
5887 4185	Idler Pulley	5 - 2 9
5887 4185	Idler Pulley	7 - 2 6
5887 4190	Pulley - 10Z	5 - 4 6
5887 4195	Stopper Screw	5 - 3 0
5887 4195	Stopper Screw	7 - 2 7
5893 2014	Spring	5 - 2 8
5918 2323	Pulley - 18Z	5 - 5 4
5937 4911	Cable Connector Bracket	9 - 2 7
5937 4912	Cable Connector Clamp	3 - 3 3
5937 4912	Cable Connector Clamp	9 - 2 9
5937 5780	Grounding Wire	7 - 3 8
5946 1111	Base Fixing Bracket	3 - 3 7
5946 1151	Harness Bracket	3 - 3 2
5946 2453	Mylar Sear - 0.125x54x55mm	5 - 4 3
5946 2453	Mylar Sear - 0.125x54x55mm	7 - 2 2
5946 2453	Mylar Sear - 0.125x54x55mm	9 - 9
5946 2511	Transport Roller Tightener	5 - 4 7
5946 2631	Safety Switch Bracket	7 - 3

Part No.	Description	Page and Index No.
5946 2641	Magnet Catch Bracket	3 - 1 2
5946 2691	Pad - 30x40x40mm	9 - 3 2
5946 3177	Transport Stay Bracket	9 - 2 4
5946 3351	Tightener Bracket	7 - 3 2
5946 3355	Washer - Tightener	7 - 2 9
5946 3421	Guide Plate - Drive Roller	7 - 2 3
5946 3511	Bracket - Front Fix Cover	3 - 1 8
5946 3516	Bracket - Rear Fix Cover	3 - 7
5946 3521	Front Cover Bracket	3 - 1 3
5946 3526	Rear Cover Bracket	3 - 6
5946 3541	Partition Plate - 62x425mm	9 - 7
5946 3561	Front Support Plate - Vertical	3 - 1 7
5946 3565	Rear Support Plate - Vertical	3 - 8
5946 3621	Partition Plate - 62x62mm	3 - 2 2
5946 3621	Partition Plate - 62x62mm	5 - 4 0
5946 3631	Link - Vertical Unit	3 - 1 0
5946 3641	Fixing Plate - Side Plate	3 - 2 9
5946 3731	Motor Tightener	9 - 1 9
5946 3761	Drive Shaft	9 - 1 5
5946 3771	Sopport Stay - Side Plate	9 - 1 6
5946 3791	Belt Tightener	7 - 9
5946 4531	Pad - 5x20x90mm	3 - 5
5946 4541	Pad - 5x20x480mm	3 - 2
5946 5230	Power Supply Cord - 115V	3 - 3 1
5946 5230	Power Supply Cord - 115V	7 - 3 3
5946 5231	Power Supply Cord - 220/240V	3 - 3 1
5946 5231	Power Supply Cord - 220/240V	7 - 3 3
5946 5300	Transformer	9 - 2 2

Part No.	Description	Page and Index No.
0313 0060W	Philips Pan Head Screw - M3x6	3-101
0313 0060W	Philips Pan Head Screw - M3x6	5-101
0313 0060W	Philips Pan Head Screw - M3x6	7-101
0313 0060W	Philips Pan Head Screw - M3x6	9-101
0313 0160W	Philips Pan Head Screw - M3x16	7-102
0313 0250W	Philips Pan Head Screw - M3x25	5-102
0313 0250W	Philips Pan Head Screw - M3x25	7-103
0313 0350W	Philips Pan Head Screw - M3x35	5-102
0313 0350W	Philips Pan Head Screw - M3x35	7-103
0314 0060W	Philips Pan Head Screw - M4x6	3-106
0314 0060W	Philips Pan Head Screw - M4x6	9-102
0314 0080W	Philips Pan Head Screw - M4x8	5-109
0315 0080W	Philips Pan Head Screw - M5x8	3-102
0315 0080W	Philips Pan Head Screw - M5x8	5-103
0315 0080W	Philips Pan Head Screw - M5x8	9-103
0315 0400W	Philips Pan Head Screw - M5x40	9-104
0344 0060F	Philips Truss Head Screw - M4x6	7-119
0434 0080W	Tapping Screw - M4x8	3-103
0434 0080W	Tapping Screw - M4x8	5-104
0434 0080W	Tapping Screw - M4x8	7-104
0434 0080W	Tapping Screw - M4x8	9-105
0573 0040E	Hexagon Headless Set Screw - M3x4	5-105
0574 0050E	Hexagon Headless Set Screw - M4x5	5-106
0574 0050E	Hexagon Headless Set Screw - M4x5	7-105
0574 0050E	Hexagon Headless Set Screw - M4x5	9-106
0720 0040E	Retaining Ring - M4	3-104
0720 0040E	Retaining Ring - M4	5-107
0720 0040E	Retaining Ring - M4	7-106
0720 0040E	Retaining Ring - M4	9-107
0741 3906	Busing-6mm	5-108
0741 3906	Busing-6mm	7-107
0741 3906	Busing-6mm	9-108
0801 1185	Philips Truss Head Screw - M4x8	7-108
0805 5003	Caster	3-105
0951 3006W	Philips Screw W/H Flat Washer - M3x6	7-109

Part No.	Description	Page and Index No.
1005 0335	Earth Mark	7-110
1100 0082	Solid Strand	11-101
1100 0885	Fastening Receptacle	11-102
1100 0916	Pin - Mate-N-Lok	11-103
1100 1041	Pin - Mate-N-Lock	13-101
1100 1042	Socket - Mate-N-Lock	13-102
1100 1155	Contact	15-101
1100 1159	Socket - Mate-N-Lock	15-102
1100 1169	Fastening Receptacle	11-104
1100 1169	Fastening Receptacle	13-103
1100 1169	Fastening Receptacle	15-103
1100 1239	Pin - Mate-N-Lock	11-105
1100 1241	Socket - Mate-N-Lock	11-106
1100 1241	Socket - Mate-N-Lock	13-104
1100 1247	Terminal	13-105
1100 1259	Socket - Mate-N-Lock	15-104
1100 1327	Contact	15-105
1100 1329	Socket Contact	17-101
1100 1330	Socket Contact	15-106
1101 0359	Terminal - 3P	7-111
1102 0782	Connector - 4P	11-107
1102 0983	Connector - 2P	13-106
1102 0984	Connector - 2P	13-107
1102 1089	Connector - 3P	15-107
1102 1286	Connector - 2P	15-108
1102 1396	Connector - 2P	15-109
1102 1407	Receptacle Housing - 1P	15-110
1102 1408	Connector - 1P	11-108
1102 1408	Connector - 1P	13-108
1102 1506	Connector - 1P	11-109
1102 1514	Connector - 1P	11-110
1102 1515	Connector - 2P	13-109
1102 1517	Connector - 4P	11-111
1102 1745	Receptacle Sleeve	11-112
1102 1815	Connector - 3P	13-110

Part No.	Description	Page and Index No.
1102 1911	Connector - 3P	15-111
1102 1982	Socket Housing - 2P	17-102
1102 1986	Socket Housing - 6P	17-103
1102 1988	Socket Housing - 8P	17-104
1102 2045	Pin Housing - 2P	15-112
1102 2048	Pin Housing - 6P	15-113
1105 0087	Clamp	7-112
1105 0087	Clamp	9-111
1105 0159	PCB Stud	9-109
1106 0212	Bushing - M15	7-113
1106 0241	Bushing - 6.7mm	7-114
1106 0310	Bushing	7-115
1107 0390	Fuse - 4A	7-116
1204 1151	Microswitch	5-110
1204 1151	Microswitch	7-117
1208 1230	Relay - G2R-11123T-V-US	9-110
1402 0423	Diode - S5500G	15-114
1602 0950	Noise Filter	7-118

Part No.	Description	Page and Index No.